

S Suprena
SEWING MACHINE



www.suprena-sewing.com

NOTE: Some products information on catalogue may be changed because of improving products. Please forgive that we will not make additional advice in advance. Because of printing question, maybe there is little difference compared with the real color of products. Sincerely sorry for the inconvenience.

S Suprena
SEWING MACHINE



www.suprena-sewing.com

DESIGN FOR JAPAN

Technology first

*Keep
On
Going!*



About Us

SUPRENA industrial sewing machine is one of the modern companies that specialized in manufacturing all kinds of sewing machines. we have advanced production line, processing center and many precision parts supplier, which could guarantee that our products could reach the international standard.

With rich management experience, advanced equipment and skilled workers, we could provide excellent products and services for our customers. With high quality and practicability, our main products sell well all over the world.

With dovish management and continuous innovation, the company uses capital as ligament, science&technology as forerunner, talents as support and market as carrier. Following the operational principle of "manage by brand, promote by reputation", and the enterprise's spirit of "solidarity, honesty, struggle", the mission of "technology creates value, innovation improves efficiency", we create well-known brand in world with all strength "SUPRENA sewing machine".

Our quality *Doing
Things
Better!*

The company bases itself on the local area, covers the whole country and will expand to the world. It takes talents as the fundamental elements and innovation as the guidance, and unwaveringly develops and expands the main business of sewing machinery. On this basis, the company will strengthen market expansion and brand promotion, actively and positively seek for further development, cautiously and pragmatically explore new strategic fields and develop forward for conglomeration and internationalization. It will occupy the market with products, create market with service and lead the market with brand.



Precision machining workshop



Assembly workshop 1



Assembly workshop 2

Thinking decision our eyereach

Its main products are lockstitch sewing machine, overlock sewing machine, interlock sewing machine, button holing machine, bar tacking machine and button-mounting machine. It can meet the multi-level demand in the sewing process of knitting fabric, clothing, luggage and so on.

We firmly believe that only with constant pursuance and innovation as well as the improvement on R&D, manufacturing and service level can we realize win-win with the customers

CATALOGUE

P03-04 CNC INTELLIGENT
TEMPLATES MACHINE

P05-12 LOCKSTITCH SEWING
MACHINE SERIES

P13-16 OVERLOCK SEWING
MACHINE SERIES

P17-21 INTERLOCK SEWING
MACHINE SERIES

P21 CRANK ARM SEWING
MACHINE SERIES

P22-23 MULTI-NEEDLE SEWING
MACHINE SERIES

P24-32 SPECIAL SEWING
MACHINE SERIES

P33-34 CUTTING MACHINE
SERIES

Simple operation

Can be a simple training, worry free, no longer difficult job.

Unified quality

A button is automatically complete all precision sewing pieces such as a stable quality.

Productive efficiency

Compared with the traditional sewing, more precise and more efficient, to maximize production efficiency.



SP 9080CNC

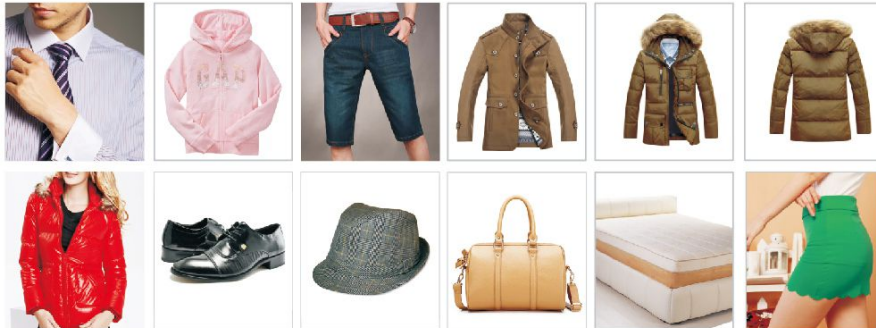
CNC intelligent templates machine

Value of garment enterprises in the application of template sewing

- 1 the use of automatic template sewing machine can replace multiple flat embroidery+ bartack..... Reduce the number of workers, ease the lack of labor problems.
- 2 using the template sewing machine, arrange and control of production processes, shorten production cycle, reduce the operation cost
- 3 clothing template technology improves the traditional garment enterprise operation mode, through the design template, template editing process, standard operating procedure to establish a simple, make the product standardization, stylized and unified.
- 4 through a large number of practice to prove that after the template production, effectively improve the overall production efficiency of about 40%, help the healthy development of garment processing enterprises.
- 5 solve the employment of the bottleneck, the use of template sewing machine, even if not to do the clothing of personnel, after a simple training can make high-quality clothing. To solve the problem of clothing enterprises for a long time to recruit skilled workers and affect the production of confusion.
- 6 template application is very flexible and can be optimized or combined process to reduce unnecessary rework and defective products, greatly enhance the sewing process, the product quality is more stable, more smooth line.

Scope of application

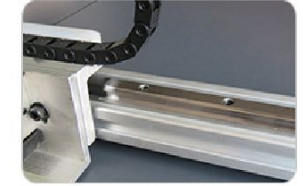
For shirts, sportswear, jeans, dress, occupation fashion, cotton padded jacket, down jacket, children's clothing, shoes and hats, bags, mattresses, car seat fabric seam.



Using motor presser foot to ensure 100% threading and leakproof cashmere



Round cutting with separate motor to ensure mute



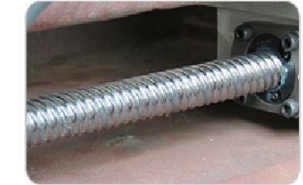
Adopting Taiwan linear slide in X axis direction without noise and runs smoothly



Using 2 times big hook to improve working efficiency and reduce the time of replacing bobbin



The X axis is driven by the rack, without slipping, and the track is more stable



The Y axis is driven by serve motor from Taiwan, and adopt leading screw from Taiwan



Super large display touch screen simple operation



Thread break automatic stop working for protecting



Automatic barcode recognition hread break automatic

Real map stitch



型号	SP-9900	程序输入方式	U盘或接USB输入
最高缝制速度	3000rpm	马达	AC直驱伺服马达
最大缝制面积	X轴1300cm Y轴800-950cm	马达功率	主轴750W
针距	0.05-12.7mm	电源	单相220V ±20%
机针型号	DP5 7#-21#	气动规格	0.4mPa-0.6mPa
压脚高度	最大30mm	包装尺寸	2100mmX2250mmX1400mm
编辑器	9英寸彩色触摸屏	机身重量	750KG

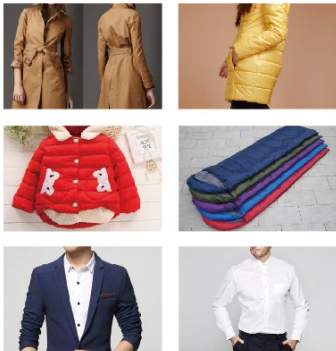


SP 9082/9056

Long arm direct drive computer lockstitch sewing machine

Perfect equipment for large material.

Table and stand size at your option
: 1.2X1.2M , 1.2X1.5M , 1.2X1.8M



- 1) Head mould-make, not weld, steady, low vibration noise.
- 2) Oil lubrication dry front head.
- 3) Needle position exactly & trimming promptly, high speed.
- 4) Auto trimmer, auto lifter and auto needle position.
- 5) Rear puller(selective): Stitch equally and beautifully, handle easily.
- 6) Working space: 56cm & 82cm, suitable for large or quilting materials and template, eiderdown outwears, spot suit, quilted jacket, wind coat, shirt, sleeping bag.

	+			L	M	H									
4 rows of teeth 4 filas de dientes	5	DBX111-18#	✓	✓	✓	-	✓	31	6-14	5000					
3 rows of teeth 3 filas de dientes	8	DBX119-24#	✓	-	-	✓	✓	35	6-14	4500					

- 1.The machine can be used when it's plugged in electricity, leaving out the problem of all kinds of plugs' chaos and installing.
- 2.It has the sewing patterns of auto-trimmer, automatic needle positioned, automatic stitch amount setter, automatic thread wipe and so on. It also has the function of several figure storage, soft start, filling needle and so on.
- 3.It uses good feeding mechanism, which greatly improves the production efficiency.
- 4.It's internally installed bobbin winder which is elegant and easy to handle.
- 5.It can prevent oil flowing from head to servo control system so that reducing stoppage and extending service life.

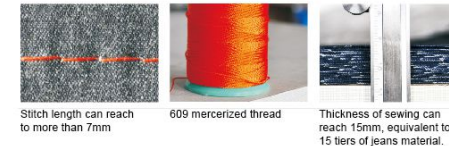


SP 9000-D4

Mechatronics direct drive high speed lockstitch sewing machine auto-trimmer

Electronic thread tension device
Stainless steel plate

Heavy duty direct drive computer high speed
Lockstitch sewing machine with auto trimmer
SP 9000H



Stitch length can reach to more than 7mm

609 mercerized thread

Thickness of sewing can reach 15mm, equivalent to 15 tiers of jeans material.

Select parts



Stainless steel plate



Built in type automatic presser foot lifter device



Import Hook



Electronic thread tension controller

SP 9000-D3	DBX1 9#-14#	0-5	-	✓	✓	✓	✓	-	✓	-	✓	5.5-15	4500	680X245X523	37/40		
SP 9000H-D3	DBX1 14#-22#	0-8	-	✓	✓	-	✓	✓	-	✓	✓	5.5-15	4000	680X245X523	37/40		
SP 9000-D4	DBX1 9#-14#	0-5	✓	✓	✓	✓	✓	-	✓	-	✓	5.5-15	4500	680X245X523	37/40		
SP 9000H-D4	DBX1 14#-22#	0-8	✓	✓	✓	-	✓	✓	-	✓	✓	5.5-15	4000	680X245X523	37/40		